

FLOW CHARTS FOR UNDERSTANDING THE MMBP ELIGIBILITY REQUIREMENTS

Purpose:

The flow charts in this document provide a series of questions that will walk you through the eligibility requirements for the MMBP Pilot. The intention is to help you understand the requirements and to give you a better sense of whether you meet the requirements. This document is NOT part of the MMBP Pilot application process, and is by no means an assessment of your eligibility for the MMBP Pilot.

Why the flow charts?

There are several avenues through which applicants can qualify for MMBP eligibility. For example, you may meet the English fluency requirement by achieving a certain score on an English language test, or by qualifying for language test exemption. In terms of your midwifery education and clinical experience, there are two main avenues for eligibility, one of which has three possibilities, allowing for differing types and timeframes of experience.

It is strongly recommended that you follow through these charts, answering the questions according to your situation. You will have a much better understanding of the application process and the evidence that you will need to provide.

Your “outcome”: *It appears that ...*

After answering sufficient questions, you will reach a double-lined box which tells you whether it appears you meet the MMBP eligibility requirements. This outcome is NOT an official assessment. It is for your information and use only, and is intended to give you an idea whether you may meet the requirements, and through which avenues.

To apply to the MMBP, you will need to complete the application process, which includes the online application, assessment and verification of evidence. Your application will be assessed by the provincial/territorial regulatory organization to which you are applying.

* Approved English-dominant countries:

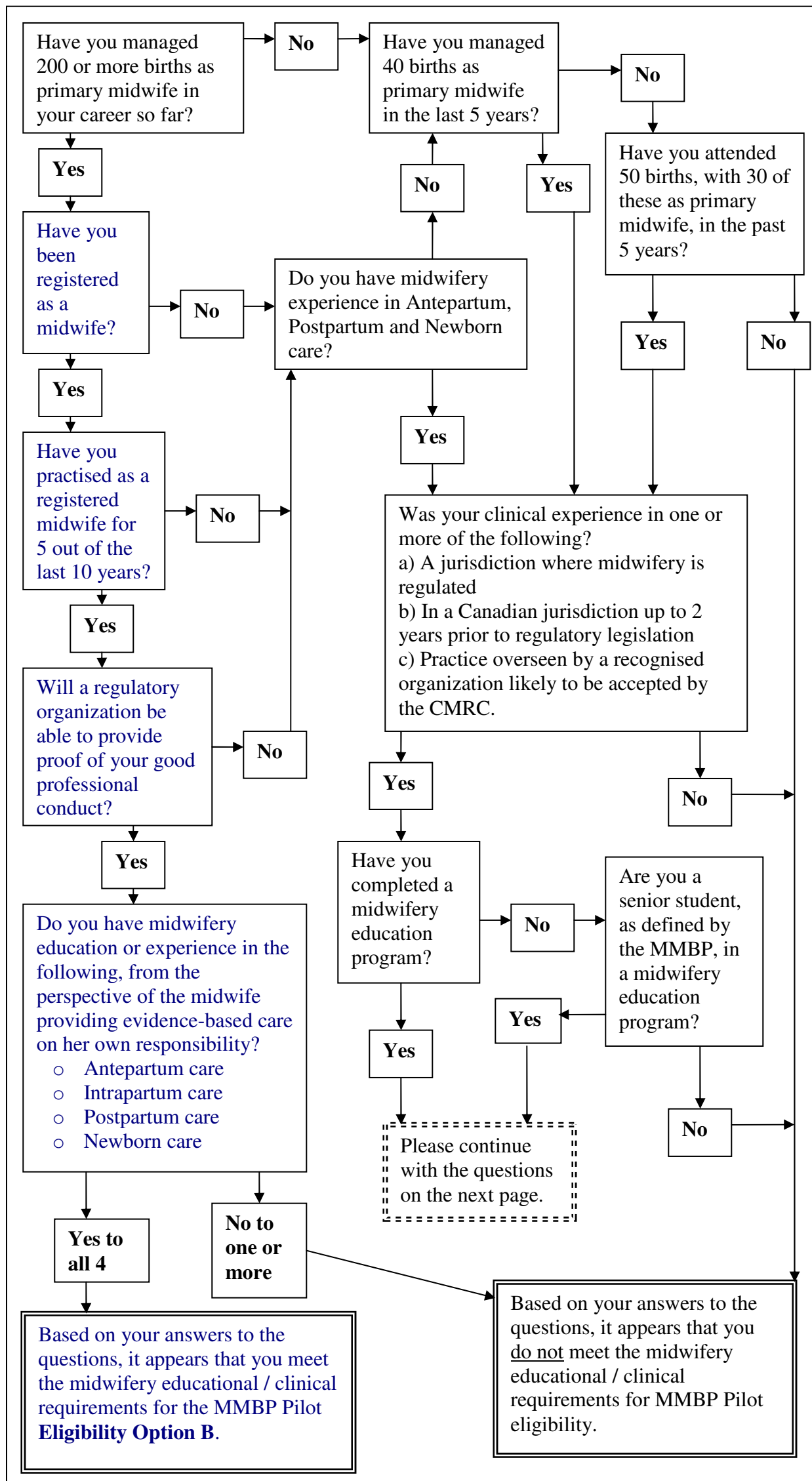
Anguilla	Gambia	Singapore
Antigua & Barbuda	Ghana	South Africa
Australia	Grenada	St. Kitts & Nevis
Bahamas	Guyana	St. Lucia
Barbados	Ireland	St. Vincent & the Grenadines
Bermuda	Jamaica	Trinidad & Tobago
Belize	Kenya	Turks & Caicos Islands
Botswana	Lesotho	Uganda
British Virgin Islands	Malta	United Kingdom
Canada (except Quebec)	Mauritius	United States of America
Cayman Islands	New Zealand	Zambia
Dominica	Nigeria	Zimbabwe
Fiji	Sierra Leone	

English Tests and Scores

Choice	Test Name	<Minimum score> Minimum Required Score for entry to MMBP pilot's first midwifery course	<Higher score> Required Score for eligibility to take CMRE (registration exam)	Website
1	BC Midwifery Language Proficiency Test (BCMLPT)	50% on each component	70% on each component	http://www.cmbc.bc.ca
2	Ontario Midwifery Language Proficiency Test (OMLPT) AND Test of Spoken English (TSE) or speaking component of another accepted language test	50% on each component	70% on each component	<i>(The OMLPT test is acceptable for MMBP entry, but has limited availability)</i>
3	International English Language Testing System (IELTS) – Academic	6.5 overall (min. 6/module)	7.0 overall (min. 6.5/module)	www.ielts.org
4	Test of English as a Foreign Language (TOEFL) AND Test of Spoken English (TSE)	560 on paper-based TOEFL or 220 on computer-based TOEFL AND 45 on TSE	580 on paper-based TOEFL, and 5 on Test of Written Language (TWE) or 237 on computer-based TOEFL, and 5 on Test of Written Language (TWE) AND 50 on TSE	www.ets.org/toefl www.ets.org/tse
5	TOEFL internet based testing (TOEFL-iBT)	83 total (min. of 20 on each component)	92 total (min of 21 on each component)	www.ets.org/toefl
6	Canadian Test of English for Scholars and Trainees (CanTEST)	4	4.5	www.cantest.uottawa.ca/index.html
7	Canadian Academic English Language Assessment (CAEL)	Min 60 in each component	Min 70 in each component	www.cael.ca
8	Cambridge Certification in Advanced English (CAE)	(same as for CMRE)	B	www.cambridgeesol.org/exams/general-english/cae.html
9	Cambridge Certification of Proficiency in English (CPE)	(same as for CMRE)	C	www.cambridgeesol.org/exams/general-english/cpe.html
10	Occupational Language Test (OLT)	(same as for CMRE)	B	www.occupationalenglishest.org

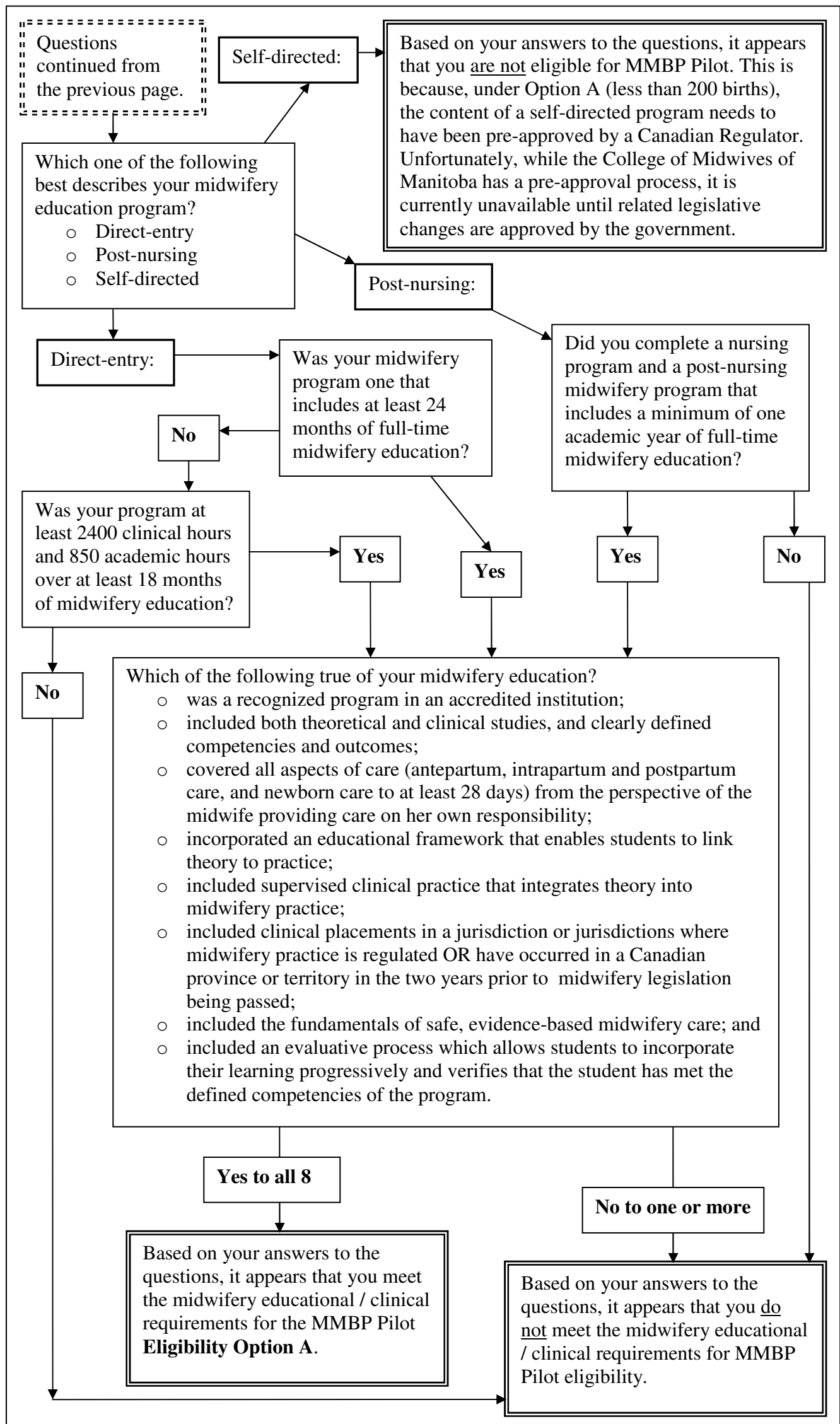
This is not an official assessment. It is for your information and use only. To apply to the MMBP, you will need to complete the application process, which includes the online application, assessment and verification of evidence. Your application will be assessed by the provincial/territorial regulatory organization to which you are applying. (270808)

Determining if you meet Clinical and Midwifery Education requirements for MMBP eligibility options A and B



This is not an official assessment. It is for your information and use only. To apply to the MMBP, you will need to complete the application process, which includes the online application, assessment and verification of evidence. Your application will be assessed by the provincial/territorial regulatory organization to which you are applying. (270808)

Determining if you meet Clinical and Midwifery Education requirements for MMBP eligibility option A (continued)



This is not an official assessment. It is for your information and use only. To apply to the MMBP, you will need to complete the application process, which includes the online application, assessment and verification of evidence. Your application will be assessed by the provincial/territorial regulatory organization to which you are applying. (270808)