

# MULTI-JURISDICTIONAL MIDWIFERY BRIDGING PROJECT

[www.midwiferybridging.ca](http://www.midwiferybridging.ca)

---

## **FLOWCHART FOR UNDERSTANDING THE ENGLISH FLUENCY REQUIREMENTS FOR ELIGIBILITY TO THE MMBP**

There are several avenues through which applicants can satisfy the English fluency requirements for eligibility to the MMBP: by achieving a certain score on an English fluency test; or by meeting one of the three criteria for exemption from English language testing.

The flowchart in this document provides a series of questions that will guide you through the English fluency eligibility requirements. The intention is to help you understand the requirements and to give you a better sense of whether you meet the requirements.

After answering sufficient questions, you will reach a double-lined box which tells you whether it appears you meet the English fluency requirements. This outcome is NOT an official assessment. It is for your information and use only, and is intended to give you an idea whether you may meet the requirements, and through which avenues.

**To apply to the MMBP, you will need to complete the application process, which includes the MMBP Application Portfolio, assessment and verification of evidence.**

### Important Notes:

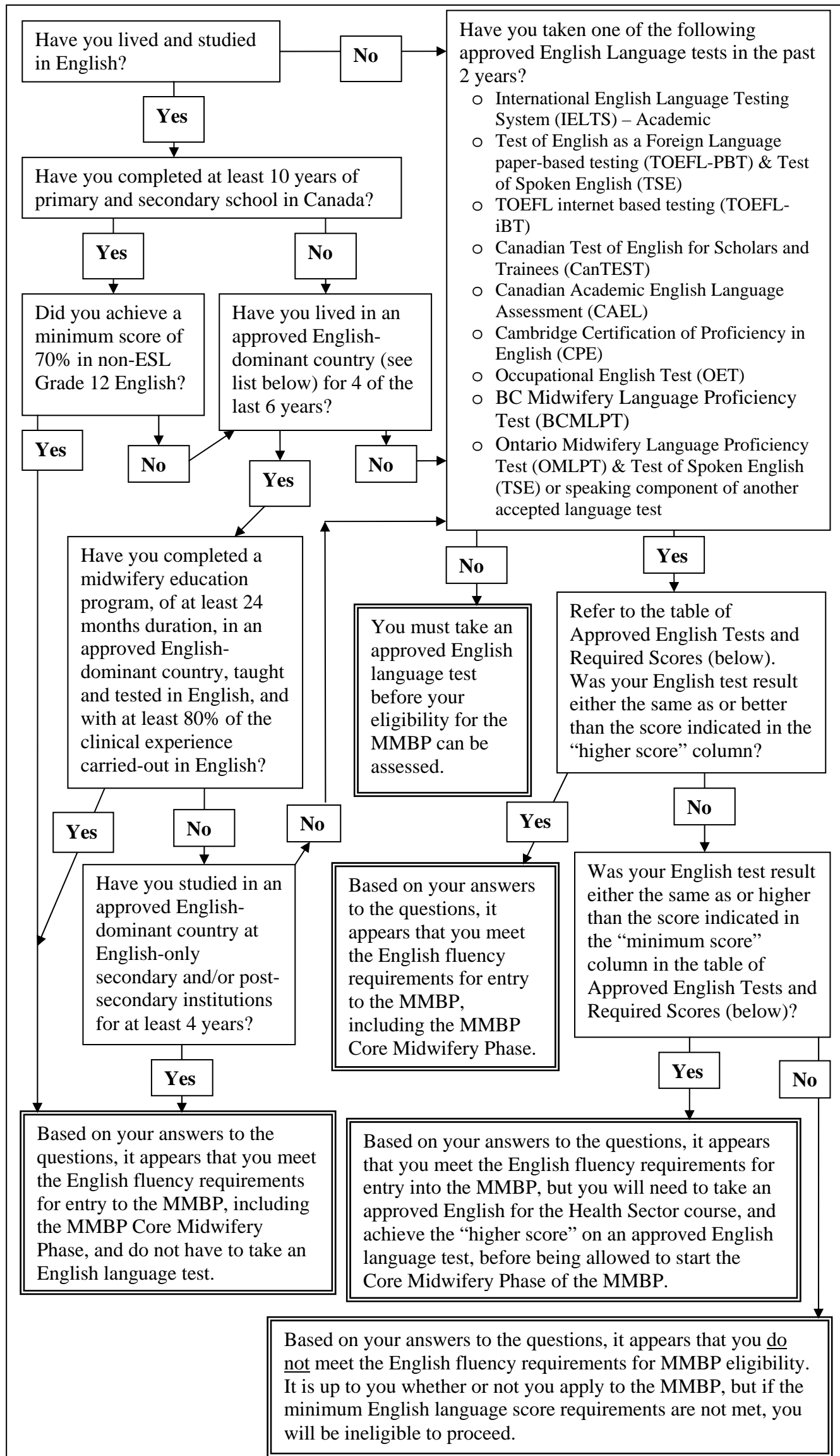
- This document is NOT part of the MMBP application process, and is by no means an assessment of your eligibility for the MMBP.
- Meeting the eligibility requirements of the MMBP does not guarantee that you will be offered a place in the MMBP. In addition to verifying that applicants meet eligibility criteria, the assessment of applications is designed to select those applicants with the best chance of success in bridging into Canadian practice via this program.

For further assistance, review the information at [www.midwiferybridging.ca](http://www.midwiferybridging.ca), or contact the MMBP Applicant Advisor at [info@midwiferybridging.ca](mailto:info@midwiferybridging.ca) or 1-800-642-2232.

### Countries considered to be English-dominant by the MMBP

Anguilla, Antigua & Barbuda, Australia, Bahamas, Barbados, Bermuda, Belize, Botswana, British Virgin Islands, Canada (except Quebec), Cayman Islands, Dominica, Fiji, Gambia, Ghana, Grenada, Guyana, Ireland, Jamaica, Kenya, Lesotho, Malta, Mauritius, New Zealand, Nigeria, Sierra Leone, Singapore, South Africa, St. Kitts & Nevis, St. Lucia, St. Vincent & the Grenadines, Trinidad & Tobago, Turks & Caicos Islands, Uganda, United Kingdom, United States of America, Zambia, and Zimbabwe.

## Determining if you meet English Fluency Requirements for MMBP Eligibility



## Approved English Tests and Required Scores

<b>Test Name</b>	<b>Required Score for entry into the MMBP</b>  <b>“Minimum score”</b>	<b>Required Score for entry into the MMBP Core Midwifery Phase</b>  <b>“Higher score”</b>	<b>Organization Offering Test</b>	<b>Sites Available</b>
International English Language Testing System (IELTS) – Academic	6.5 overall (min. 6/component)	7.0 overall (min. 6.5/component)	British Council, IELTS Australia and the University of Cambridge ESOL Examinations <a href="http://www.ielts.org">www.ielts.org</a>	Worldwide (120 countries)
Test of English as a Foreign Language paper-based testing (TOEFL-PBT)  <b>AND</b>  Test of Spoken English (TSE)	560 paper-based  <b>AND</b> 45 on TSE	580 paper-based and 5 on Test of Written English (TWE)  <b>AND</b> 50 on TSE	Educational Testing Service (ETS) <a href="http://www.ets.org">www.ets.org</a> <a href="http://www.toefl.org">www.toefl.org</a> <a href="http://www.ets.org/tse">www.ets.org/tse</a>	Worldwide (iBT & PBT in 165 countries)
Test of English as a Foreign Language internet based testing (TOEFL-iBT)	83 total (min. of 20 on each component)	92 total (min of 21 on each component)	Educational Testing Service (ETS) <a href="http://www.ets.org">www.ets.org</a> <a href="http://www.toefl.org">www.toefl.org</a>	Worldwide (iBT & PBT in 165 countries)
Canadian Test of English for Scholars and Trainees (CanTEST)	4	4.5	Official Languages and Bilingualism Institute, University of Ottawa <a href="http://www.olbi.uottawa.ca/en/cantest.php">www.olbi.uottawa.ca/en/cantest.php</a>	Ottawa, Toronto, and sometimes other sites in Canada
Canadian Academic English Language Assessment (CAEL)	60 overall (min 60 on each component)	70 overall (min 70 on each component)	CAEL Assessment Office, Carlton University <a href="http://www.cael.ca">www.cael.ca</a>	Across Canada plus 9 countries
Cambridge Certification in Advanced English (CAE)	B	B	ESOL Exams, University of Cambridge <a href="http://www.cambridgeesol.org">www.cambridgeesol.org</a>	Worldwide (130 countries)
Cambridge Certification of Proficiency in English (CPE)	C	C	ESOL Exams, University of Cambridge <a href="http://www.cambridgeesol.org">www.cambridgeesol.org</a>	Worldwide (130 countries)
Occupational English Test (OET)	B	B	OET Centre University of Melbourne <a href="http://www.occupationalenglishtest.org">www.occupationalenglishtest.org</a>	Worldwide (40 countries)
BC Midwifery Language Proficiency Test (BCMLPT)	50% overall (min 50% on each component)	70% overall (min 70% on each component)	College of Midwives of BC <a href="http://www.cmbc.bc.ca">www.cmbc.bc.ca</a> Note: The BCMLPT will only be offered when there is sufficient interest.	Vancouver, Canada
Ontario Midwifery Language Proficiency Test (OMLPT)  <b>AND</b>  Test of Spoken English (TSE) <b>or</b> speaking component of another approved language test	50% overall (min 50% on each component)  <b>AND</b> 45 on TSE  <b>or</b> contact MMBP to discuss acceptable test components and the minimum score required	70% overall (min 70% on each component)  <b>AND</b> 50 on TSE  <b>or</b> contact MMBP to discuss acceptable test components and the higher score required	Ryerson University’s IMPP <a href="http://www.ryerson.ca/ce">www.ryerson.ca/ce</a> Note: The OMLPT test is acceptable for MMBP entry, but has limited availability. See above for info on TSE.	Toronto, Canada

*This is not an official assessment. It is for your information and use only. To apply to the MMBP, you will need to complete the application process, which includes the online application, assessment and verification of evidence. (December 2009)*