

FLOWCHART FOR UNDERSTANDING THE MIDWIFERY BACKGROUND REQUIREMENTS FOR ELIGIBILITY TO THE MMBP

The requirements for midwifery education and clinical experience offer two main avenues for MMBP eligibility, one of which has three possibilities, allowing for differing types and timeframes of experience.

The flowchart in this document provides a series of questions that will guide you through the midwifery background eligibility requirements. The intention is to help you understand the requirements and to give you a better sense of whether you meet the requirements.

After answering sufficient questions, you will reach a double-lined box which tells you whether it appears you meet the midwifery background eligibility requirements. This outcome is NOT an official assessment. It is for your information and use only, and is intended to give you an idea whether you may meet the requirements, and through which avenues.

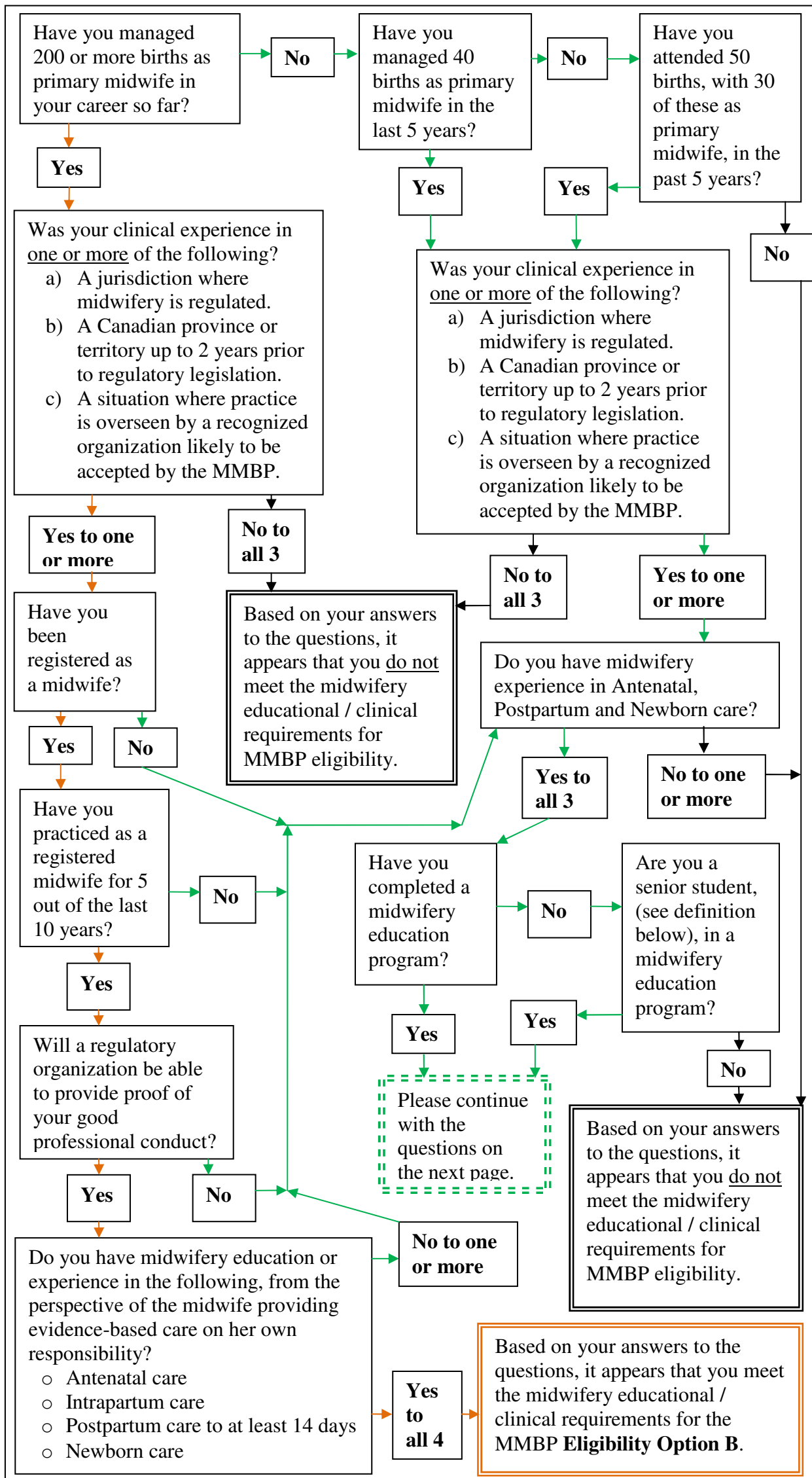
To apply to the MMBP, you will need to complete the application process, which includes the MMBP Application Portfolio, assessment and verification of evidence.

Important Notes:

- This document is NOT part of the MMBP application process, and is by no means an assessment of your eligibility for the MMBP.
- Meeting the eligibility requirements of the MMBP does not guarantee that you will be offered a place in the MMBP. In addition to verifying that applicants meet eligibility criteria, the assessment of applications is designed to select those applicants with the best chance of success in bridging into Canadian practice via this program.

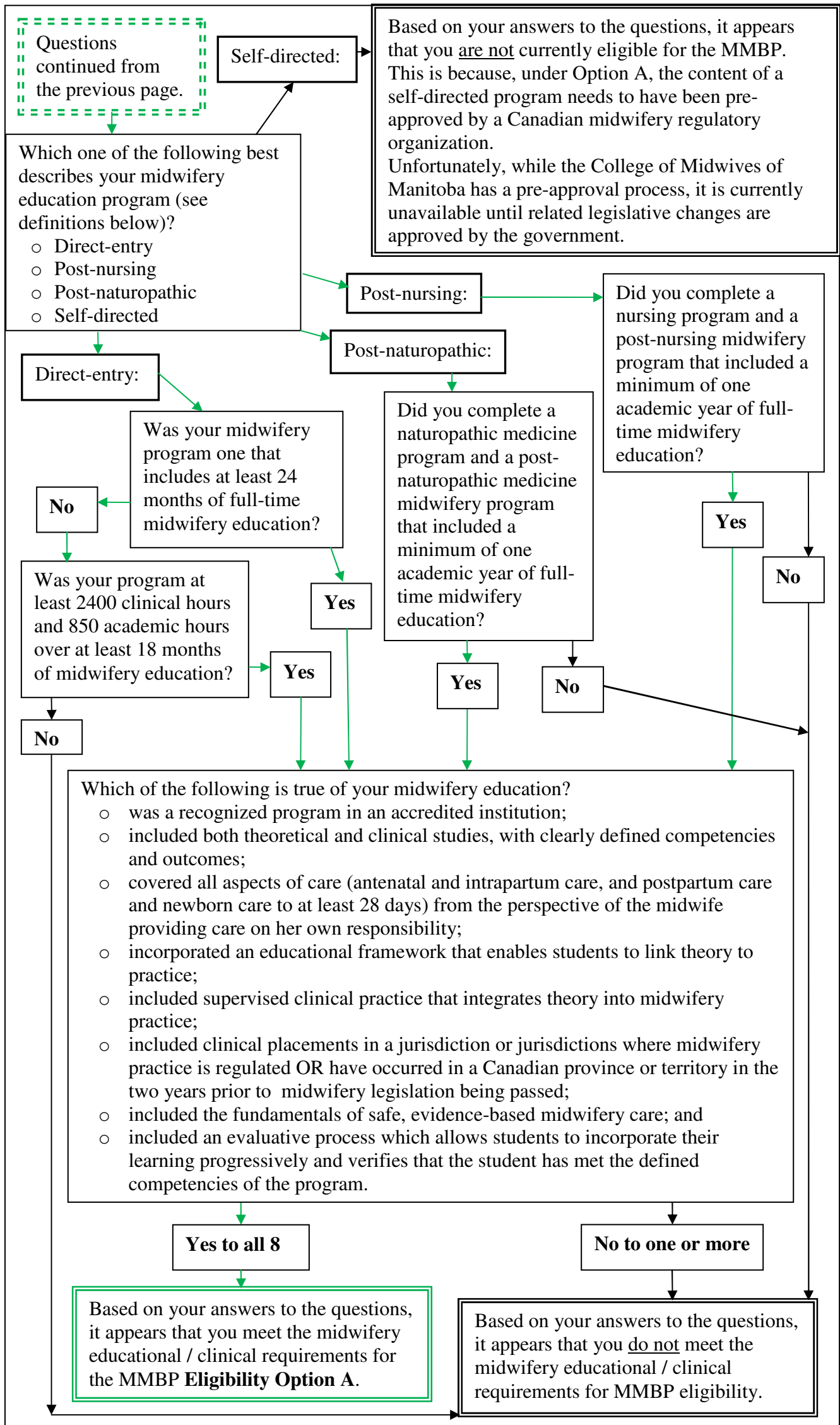
For further assistance, review the information at www.midwiferybridging.ca, or contact the MMBP Applicant Advisor at info@midwiferybridging.ca or 1-800-642-2232.

Determining if you meet Clinical and Midwifery Education requirements for MMBP eligibility options A and B



This is not an official assessment. It is for your information and use only. To apply to the MMBP, you will need to complete the application process, which includes the online application, assessment and verification of evidence. (291009)

Determining if you meet Clinical and Midwifery Education requirements for MMBP eligibility option A (continued)



Glossary:

Accredited educational institution: A school that has been officially recognized by the appropriate local accrediting authority as meeting the essential requirements.

Direct-entry midwifery education: A formal midwifery education program that does not require a healthcare qualification for entry.

Jurisdiction: The territory within which the given laws apply.

“On her own responsibility”: The midwife is responsible for all care she/he provides and decisions she/he makes during the course of pregnancy, labour, delivery and postpartum. The care and decisions are not delegated from, directed by or supervised by any other care provider.

Post-naturopathic midwifery education: A formal midwifery education program that requires a doctor of naturopathic medicine qualification for entry. Note: a formal naturopathic midwifery program that is integrated within the basic naturopathic program may also be included in this definition if it is equivalent.

Post-nursing midwifery education: A formal midwifery education program that requires a nursing qualification for entry.

Primary midwife: A midwife with complete, non-delegated, responsibility for the care of a woman and her newborn. The primary midwife is normally responsible for managing the labour and delivery and for the immediate care of the newborn. In cases where complications arise, the primary midwife makes the decision to transfer care, coordinates the transfer, collaborates with the health professional to whom she has referred her client, and provides supportive care after the transfer occurs. Supervised student midwives who act in the role of primary midwife are also included in this definition.

Self-directed midwifery education: A midwifery education program designed by and for an individual student that is not connected to a formal program. Sometimes called “apprenticeship training.” (Self-directed education must be pre-approved by a Canadian regulatory body for admission to the MMBP. *This approval process will be available via the College of Midwives of Manitoba once required legislative changes are passed by the Manitoba government.*)

Senior student: A senior student will complete her/his midwifery education in time for a transcript to be received by the MMBP office by the *MMBP Application Portfolio Submission Deadline*. The transcript must state that the senior student has completed the midwifery education program.